

### 23 centimeter antennas

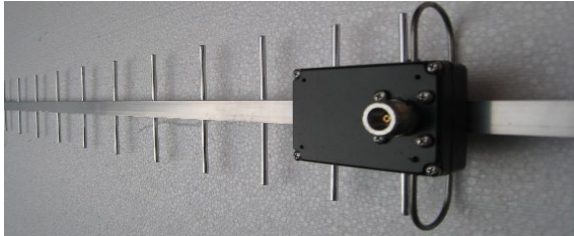
**10EPS1280**, Gain 11,7 dBd

Load up to 150 Watt

Weihgt < 0,5 kg

Boomdiameter 15 x 15 x 1,5 mm

Pre-mast mounting **€ 69,00**



**21EPS1280**, Gain 14,4 dBd, F/B 18 dB, VSWR 1:1,1

Load up to 150 Watt, connection N-type, length 1,69 meter

Weihgt < 1kg, turningcirkel 1,60 meter, windload 40 N by 150 km/h

Boomdiameter square 15 x 15 x 1,5 mm, elementdiameter 4 mm

Pre-mast mounting **€ 89,00**

**45EPS1280**, Gain 19,5 dBd, F/B 22 dB, VSWR 1:1,1

Load up to 150 Watt, Connection N-tytpe, length 3.40 mtr

Weight ca 2 kg, turningcirkel 1,75 meter, windload 100 N by 150 km/h

Boomdiameter square 15 x 15 x 1,5 mm, elementdiameter 4 mm

### 70 centimeter antennas

**10EPS435 MK2**, gain 11,7 dBd, F/B 16 dB, VSWR 1:1 @ 435 MHz

Load up to 1 kWatt, connection N-type, length 1,40 meter

Weight ca 1,2 kg, turningcirkel 0.75 meter, windload 60 N by 150 km/h

Boomdiameter 15 x 15 x 1,5 mm, elementdiameter 5 mm, driverdiam. 10 mm

**€ 99,00**

**21EPS435 MK2**, Gain 14,4 dBd, F/B 20 dB, VSWR 1:1 @ 435 MHz

Load up to 1 kWatt, connection N-type, length 4,50 meter

Weight ca 3 kg, turningcirkel 2,60 meter, windload 160 N by 150 km/h

Boomdiameter 15 x 15 x 1,5 mm, elementdiameter 5 mm, driverdiam. 10 mm

**€ 169,00**



### 2 meter antennas



**4EPS145**. Gain 8,0 dBd, F/B 16 dB, VSWR 1,1:1 @ 145 MHz

Load up to 500 W, connection N-type, length 1,47 meter, weight ca 1 kg

Turningcirkel 1,55 meter, windload 50 N by 150 km/h, boomdiam. 20 x 20 x 1,5 mm

Elementdiameter 5 mm, driverdiameter 12 mm, pre-mast mounting

**€ 69,00**

**7EPS145**, Gain 10,0 dBd, F/B 18 dB, VSWR 1,1:1 @ 145,000 MHz

Load up to 500 W, connection N-type, Length 2,80 meter, weight ca 1,5 kg

Turningcirkel 1,45 meter, windload 80 N by 150 km/h

Boomdiameter 20 x 20 x 1,5 mm, elementdiameter 5 mm, driverdiam. 12 mm

**€ 99,00**

**10EPS145**, Gain 11,7 dBd, F/B 18 dB, VSWR 1,1:1 @ 144,500 MHz

Load up to 1 kWatt, connection N-type, Lengte 4,48 meter, weight ca 3 kg

Turningcirkel 2,30 meter, windload 210 N by 150 km/h

Boomdiameter 20 x 20 x 1,5 mm, elementdiameter 5 mm, driverdiam. 12 mm

**€ 135,00**

**4EPS145X**, Gain 8,0 dBd, F/B 16 dB, VSWR 1,1:1 @ 145 MHz

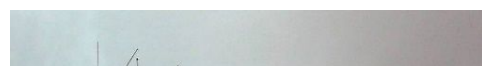
Load up to 500 Watt, connection 2 x N-type, length 1,55 meter

Weight ca 1,5 kg, turningcirkel 1,50 meter, windload 65 N by 150 km/h

Boomdiameter 20 x 20 x 1,5 mm, elementdiameter 5 mm, driverdiam. 12 mm

Pre-mast mounting

**€ 99,00**



Load up to 500 Watt, connection 2 x N-type, length 2,90 meter  
Weight ca 2,5 kg, turningcirkel 1,50 meter, windload 100 N by 150 km/h  
Boomdiameter 20 x 20 x 1,5 mm, elementdiameter 5 mm, driverdiam. 12 mm

**€ 119,00**



## 4 meter antennas



**2 element HB9CV**, Gain 4,2 dBd, F/B 20 dB, VSWR 1:1 @ 70,125 MHz

Load up to 500 Watt, PL connection, Length 0,58 mtr, weight ca 1kg

Windload 50 N by 150 km/h, boomdiameter 20 x 20 x 1,5 mm

Elementdiameter round 12/10 mm, turningcirkel 1,17 meter

Coaxial joining

**€ 75,00**



**3 element HB9CV**, Gain 6,2 dBd, F/B 20 dB, VSWR 1:1 @ 70,125 MHz

Load up to 500 Watt, PL connection, length 1,12 mtr, weight ca 1,5kg

Windload 75 N by 150 km/h, boomdiameter 20 x 20 x 1,5 mm

Elementdiameter round 12/10 mm, turningcirkel 1,22 meter

Coaxial joining

**€ 95,00**

## 6 meter antennas



**2 element HB9CV**, Gain 4,2 dBd, F/B 20 dB, VSWR 1:1 @ 50,150 MHz

Load up to 500 Watt, PL connection, Length 0,8 mtr, weight ca 1kg

Windload 60 N by 150 km/h, boomdiameter 20 x 20 x 1,5 mm

Elementdiameter round 12/10 mm, turningcirkel 1,55 meter

Coaxial joining

**€ 79,00**



**3 element HB9CV**, Gain 6,2 dBd, F/B 20 dB, VSWR 1:1 @ 50,150 MHz

Load up to 500 Watt, PL connection, Length 1,55 mtr, weight ca 1,5kg

Windload 90 N by 150 km/h, boomdiameter 20 x 20 x 1,5 mm

Elementdiameter round 12/10 mm, turningcirkel 1,70 meter

Coaxial joining

**€ 99,00**



**3EPS50**, Gain 6,3 dBd, F/B 22 dB VSWR 1:1 adjustable by gamma-match

Load up to 500 Watt, Length 2,08 mtr, windload 90 N by 150 km/h

Weight ca 1,8 kg, Boomdiameter 20 x 20 x 1,5 mm

Elementdiamter rond 12/10 mm

**€ 99,00**



**5EPS50**, Gain 8,72 dBd, F/B 25 dB VSWR 1:1 @ 50,150 28 Ohm system

Load up to 500 Watt, Length 4,84 mtr, windload 160 N by 150 km/h

Weight ca 1,8 kg, boomdiameter 20 x 20 x 1,5 mm

Elementdiamter round 12/10 mm

**€ 169,00**

## Duoband Antennas



**3-5EPS620**, Gain 6,0/8,5 dBd, F/B 18 dB, VSWR < 1:1,2 @ 50,150 MHz and 145 MHz

Load up to 1 kW, connection 2 x N-type, Length 2,30 meter

Weight ca 2,5 kg, turningcirkel 1,90 meter, windload 150 N by 150 km/h

Boomdiameter square 20 x 20 x 1,5 mm, elementdiameter 6 meter section

round 12/10 mm, elementdiameter 2 meter section round 5 mm

**€ 145,00**



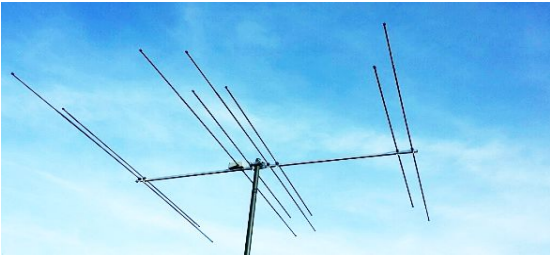
223EPS642, Gain 4,5dBd @ 6 mtr, 4,3dBd @ 4 mtr and 5,4 dBd @ 2 mtr

Load up to 500 W, N-type connector, Length 1,25 mtr





Weight c.a. 2kg, turningcirkel 1,65 mtr, Windload 130 N by 150 km/h  
 Boomdiameter 20 x 20 x 1,5 mm, Elementdiameter 12, 10 en 5 mm  
**€ 135,00**

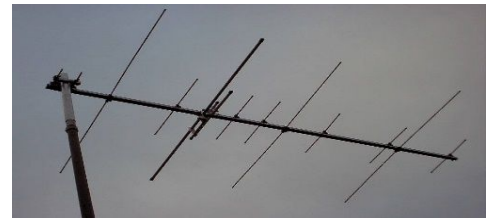


44EPS64, Gain 8,6dBd @ 6 mtr and 8,4 dBd @ 4 mtr  
 Load up to 500 W, N-type connector, Length 2,08 mtr  
 Weight c.a. 3kg, turningcirkel 1,80 mtr, Windload 150 N by 150 km/h  
 Boomdiameter 20 x 20 x 1,5 mm, Elementdiameter 12 en 10 mm  
**€ 199,00**

**3-4EPS270** Gain 6,3/6,5 dBd, F/B 16 dB, VSWR < 1:1,2 @ 145 and 435 MHz  
 Load to 500 W, connection 2 x N-type, Length 0,90 meter  
 Weight ca 1,2 kg, turningcirkel 1,20 meter, windload 45 N by 150 km/h  
 Boomdiameter square 15 x 15 x 1,5 mm, elementdiameter round 5 mm  
 Driverdiameter round 12 mm  
**€ 89,00**



**4-7EPS270**, Gain 8,0/9,0 dBd, F/B 18 dB, VSWR < 1:1,2 @ 145 and 435 MHz  
 Load up to 500 W, connection 2 x N-type, Length 1,72 meter  
 Weight ca 2 kg, turningcirkel 1,55 meter, windload 60 N by 150 km/h  
 Boomdiameter square 15 x 15 x 1,5 mm, elementdiameter round 5 mm  
 Driverdiameter round 12 mm  
**€ 105,00**



**3-6EPS270HV** Gain 6,3/8,9 dBd, F/B 18 dB, VSWR < 1:1,2 @ 145 and 435 MHz  
 Load up to 500 W, connection 2 x N-type, Length 0,93 meter  
 Weight ca 1,3 kg, turningcirkel 1 meter, windload 45 N by 150 km/h  
 Boomdiameter square 15 x 15 x 1,5 mm, elementdiameter round 5 mm  
 Driverdiameter round 12 mm  
**€ 99,00**



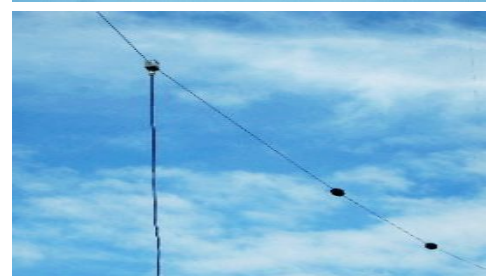
**5-9EPS270HV** Gain 8,5/11,2 dBd, F/B 18 dB, VSWR < 1:1,2 @ 145 and 435 MHz  
 Load up to 500 W, connection 2 x N-type, Length 1,63 meter  
 Weight ca 2,5 kg, turningcirkel 1,70 meter, windload 60 N by 150 km/h  
 Boomdiameter square 15 x 15 x 1,5 mm, elementdiameter round 5 mm  
 Driverdiameter round 12 mm  
**€ 109,00**



## HF Antennes



**EPS102040**  
 Horizontal dipool for 10, 20 en 40 mtr  
 No tuner needed at these bands  
 Total length 14,24 meter  
**€ 119,00**



**G5RV** with balun, length 2 x 15,50 meter **€ 89,00**  
**G5RV** junior with balun, length 2 x 7,75 meter **€ 79,00**  
**G5RV** without balun, length 2 x 15,50 meter **€ 62,50**  
**G5RV** junior without balun, length 2 x 7,75 meter **€ 52,50**  
**ZS6BKW** with balun, length 2 x 13,75 meter **€ 89,00**  
**ZS6BKW** without balun, length 2 x 13,75 meter **€ 62,50**  
**ZS6BKW** junior with balun, length 2 x 6,90 meter **€ 79,00**  
**ZS6BKW** jr without balun, length 2 x 6,90 meter **€ 52,50**



<b>Balun 1:1</b> 400 Watt for dipole	€ 42,50
<b>Balun 1:1</b> 1000 Watt for dipole	€ 62,50
<b>Balun 1:4</b> 400 Watt for dipole 200-300 Ohm	€ 42,50
<b>Balun 1:6</b> 1000 Watt for FD3 of FD4	€ 69,50
<b>Balun 1:9</b> 400 Watt for end fed wire	€ 42,50
<b>Shieldcurrentfilter</b> PL-PL or PL-screw-eye	€ 42,50



### BCL clamp

Universal clamp with double PL259 connection  
to be used with antenna-experiments for various purposes  
e.g.  $\frac{1}{2} \lambda$  or other forms of antennas.  
Plate with multiple screws to attach radials to it  
Can be used for both HF and VHF  
Mast mounting up to 50 mm **€ 22,50**

## Antennas

G5RV allband ant. 10-80 mtr met 1:1 balun	€ 89,00
G5RV, without balun	€ 62,50
G5RV junior 10-40 meter with 1:1 balun	€ 79,00
G5RV junior, without balun	€ 52,50
EPS102040 with traps, no tuner needed !	€ 119,00
EPS Windom D3, 10-40 meter	€ 135,00
EPS Windom D4, 10-80 meter	€ 159,00

### 2 meter:

2 elements HB9CV	4,2 dBd	€ 37,50
3 elements HB9CV	6,2 dBd	€ 47,50
4 el. beam 4EPS145	8,0 dBd	€ 69,00
7 el. beam 7EPS145	10,0 dBd	€ 99,00
10 el. beam 10EPS145	11,7 dBd	€ 135,00
4 el. X-Yagi 4EPS145X	8,0 dBd	€ 89,00
7 el. X-Yagi 7EPS145X	10,0 dBd	€ 119,00

### 23 centimeter:

10 el. beam 21EPS1280	11,7 dBd	€ 69,00
21 el. beam 21EPS1280	14,4 dBd	€ 89,00
45 el. beam 45EPS1280	19,5 dBd	€ 149,00

### Duoband / triband antennas:

Maas / Hamking X30 3,0 dB / 5,5 dB 1,3 meter	€ 39,00
Maas / Hamking X50 4,5 / 7,2 dB 1,7 meter	€ 47,50
Maas / Hamking X200 6,0 / 8,0 dB 2,50 meter	€ 69,00
Maas X300 6,5 / 9,0 dBi 3,1 meter	€ 75,00
Hamking X2000 6 / 2 / 70 2,15 / 6,2 / 8,4 dBi	€ 69,00
Hamking DS3000 TX 2 / 70 / 23 RX 75-3000Mc	€ 89,00
MA6000 8,3 / 11,7 dB 5,2 meter	€ 115,00
Comet GP93 2/70/23 4,5 / 7,2 / 10,0 dBi	€ 129,00
Comet GP95 2/70/23 6,0 / 8,6 / 12,8 dB	€ 149,00
Comet GP98 2/70/23 6,5 / 9,0 / 13,5 dBi	€ 189,00
3-4EPS270 3 el. 2mtr/4 el 70cm	6,3/6,5 dBd € 89,00
4-7EPS270 4 el. 2mtr/7 el.70cm	8,0/9,0 dBd € 105,00
3-6EPS270HV 3 el.2mtr/6el 70cm	6,3/8,9 dBd € 99,00
5-9EPS270HV 5 el.2mtr/9el 70cm	7,5/11,2 dBd € 109,00
3-5EPS620 3 el. 6 mtr/5 el. 2 mtr	6,0/8,5 dBd € 145,00
4-4EPS64 4 and 6 meter	8,6/8,4 dBi € 199,00
223EPS642 2, 4 and 6 meter	4,5/5,4dBd € 125,00

### 6 meter:

2 elements HB9CV	4,2 dBd	€ 79,00
3 elements HB9CV	6,2 dBd	€ 99,00
3 el.beam 3EPS50	6,3 dBd	€ 99,00
5 el.beam 5EPS50	8,72 dBd	€ 169,00

### 4 meter:

2 elements HB9CV	4,2 dBd	€ 75,00
3 elements HB9CV	6,2 dBd	€ 95,00
4EPS70	8,0 dBd	€ 129,00
6EPS70	10,2 dBd	€ 165,00
EPS70V, $\frac{1}{2}$ golfstraler	2 dBd	€ 69,00

### 70 centimeter:

2 elements HB9CV	4,2 dBd	€ 27,50
3 elements HB9CV	6,2 dBd	€ 37,50
3+3 el. HB9CV	9,5 dBd	€ 52,50
10 el. beam 10EPS435	11,7 dBd	€ 99,00
21 el. beam 21EPS435	14,4 dBd	€ 169,00

### 13 centimeter:

21 el. beam 21EPS2350	14,4 dBd	€ 89,00
-----------------------	----------	---------

### Powerdividers:

PS145-2	€ 52,50	PS1296-2	€ 42,50
PS145-4	€ 62,50	PS1296-4	€ 57,50
PS145-2L	€ 67,50	PS1296-2L	€ 57,50
PS145-4L	€ 82,50	PS1296-4L	€ 67,50
PS435-2	€ 49,00	PS2400-2	€ 42,50
PS435-4	€ 57,50	PS2400-4	€ 57,50
PS435-2L	€ 57,50	PS2400-2L	€ 57,50
PS435-4L	€ 72,50	PS2400-4L	€ 67,50



## Clamps and co

**Wallbracket:**

**Crossclamps:**

MB10	€ 15,00	Crossclamp 38/38	€ 15,00
MB15	€ 18,00	Crossclamp 38/42	€ 15,00
MB20	€ 22,50	Crossclamp 42/42	€ 16,00
MB30	€ 29,00	Crossclamp 42/50	€ 17,00
MB40	€ 32,50	Crossclamp 50/50	€ 18,00
MB50	€ 39,00	Crossclamp 48/60	€ 19,00
		Crossclamp 60/60	€ 19,00



**Clamps:**

Clamp 28	€ 1,80
Clamp 32	€ 1,90
Clamp 36	€ 2,00
Clamp 38	€ 2,00
Clamp 42	€ 2,10
Clamp 45	€ 2,10
Clamp 48	€ 2,30
Clamp 50	€ 2,50
Clamp 52	€ 2,50
Clamp 54	€ 2,60
Clamp 60	€ 2,80
Clamp 70	€ 3,00
Clamp 76	€ 3,40

**Various clampmaterials:**

Boomclamp 15mm	€ 6,95
Boomclamp 20 mm	€ 6,95
Tensioning device 80mm	€ 14,00
Straigh crosspipe 75 cm	€ 13,00
Curved crosspipe	€ 17,00
Dub. Curved crosspipe 1 m	€ 28,00
Dub. Curved crosspipe 1,4 m	€ 30,00
Heavy dub. Cur. Cr.pipe	€ 49,00
Chimneybracket	€ 42,50
Leaden rooftransit	€ 39,95
Tripot with mast	€ 39,50
STL10050 tripot 1 meter	€ 99,00
STL15060 tripot 1,5 meter	€ 149,00

**DC power supplies:**

SPS250-II 13,8V, 25A switched	€ 89,00
K-PO KPS28SW 13,8v, 28A max.	€ 79,00
K-PO KPS28D 13,8v, 28A max.	€ 99,00
SPS30SW 13,8V, 30A switched	€ 99,00
SPS350-II Digital 13,8V, 30A sw.	€ 125,00
SPS30-II 13,8V, 35A switched	€ 95,00
SPS50-II 13,8V, 55A switched	€ 139,00
SPS50SW 13,8V, 50A switched	€ 139,00



**Alu. slidemasten:**

Transport length 1,60 mtr

Allen clamping device With clamping lever

**Light version**

PSM 571628	€ 59,00	PSM 571628-K	€ 74,00
PSM 711632	€ 75,00	PSM 711632-K	€ 95,00
PSM 851636	€ 89,00	PSM 851636-K	€ 114,00
PSM 991640	€ 109,00	PSM 991640-K	€ 139,00
PSM 1131645	€ 129,00	PSM 1131645-K	€ 165,00
PSM 1271650	€ 159,00	PSM 1271650-K	€ 199,00

**Heavy-duty 1 version**

PSM 572436	€ 75,00	PSM 572436-K	€ 89,00
PSM 712440	€ 89,00	PSM 712440-K	€ 109,00
PSM 852445	€ 115,00	PSM 852445-K	€ 139,00
PSM 992450	€ 139,00	PSM 992450-K	€ 169,00
PSM 1132455	€ 179,00	PSM 1132455-K	€ 215,00
PSM 1272460	€ 219,00	PSM 1272460-K	€ 259,00

**Heavy-duty 2 version**

PSM 572840	€ 89,00	PSM 572840-K	€ 105,00
PSM 712845	€ 109,00	PSM 712845-K	€ 129,00
PSM 852850	€ 139,00	PSM 852850-K	€ 165,00
PSM 992855	€ 175,00	PSM 992855-K	€ 205,00
PSM 1132860	€ 195,00	PSM 1132860-K	€ 230,00

**Extra Heavy-duty**

PSM 573245	€ 109,00	PSM 573245-K	€ 125,00
PSM 713250	€ 139,00	PSM 713250-K	€ 159,00
PSM 853255	€ 159,00	PSM 853255-K	€ 185,00
PSM 993260	€ 179,00	PSM 993260-K	€ 209,00

**Compact version**

Transportlengte 0,90 mtr			
PSM461640	€ 69,00	PSM461640-K	€ 99,00
Transportlengte 1,15 mtr			
PSM641640	€ 95,00	PSM641640-K	€ 125,00

**Mobile tranceivers:**



**CRT Micron**

VHF / UHF 25 / 20 Watt full duplex  
200 channels € 139,00



**Wouxun KG-UV980R**

6, 4, 2 and 70 cm, RX AM 108-136 MHz  
Many other RX freqeucys  
50 Watt € 389,00



**Tytera TYT9800**

10, 6, 2 and 70 cm  
RX AM 108-136 MHz  
Many other RX freqeucys  
50 Watt € 319,00

**SWR meters**

RS200	1,8-160 MHz	0,5 Watt / 400 Watt	€ 69,00
-------	-------------	---------------------	---------





RS400 140-525 MHz 0,5 Watt / 400 Watt € 69,00  
 RS600 1,8-160 MHz en 140-525 MHz € 89,00  
 Input for HF and input for VHF / UHF  
 RS1000 1,8-160 MHz en 430-1300 MHz € 98,00  
 0,5 Watt / 400 Watt, Input for HF and input for VHF / UHF



RX200 1,8-160 MHz 0,5 Watt / 3 kWatt € 75,00  
 RX400 140-525 MHz 0,5 Watt / 600 Watt € 79,00  
 RX600 1,8-160 MHz en 140-525 MHz € 89,00  
 0,5 Watt / 3 kWatt, Input for HF and input for VHF / UHF



DG-503 1,6-60 MHz en 125-525 MHz € 149,00  
 1 Watt / 200 Watt, Input for HF and input for VHF / UHF



RX20 1,8-200 MHz 30 / 300 Watt € 55,00  
 RX40 140-525 MHz 15 / 150 Watt € 55,00



Comet CAT300 € 269,00  
 Antennetuner 1,8-60 MHz, 300 Watt  
 Input impedance 50 Ohm  
 Output impedance 10-600 Ohm



Comet CAT283 € 250,00  
 VHF / UHF Antennetuner  
 Input impedance 50 Ohm  
 Output impedance 15-200 Ohm  
 Frequency range 125-210 KHZ and 400-450 MHz

EPS Antennas  
 Paul Scholten  
 Sandstrasse Süd 5  
 D-49808 Lingen  
 Tel: +49 (0)591-9778400  
 Mobiel +31 (0)6 53462323  
 e-mail: info@eps-antennas.de  
 internet: www.eps-antennas.de

